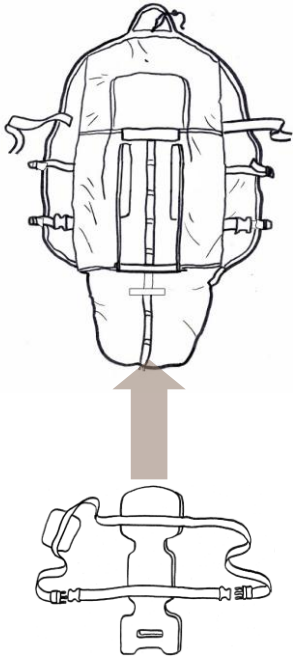


# Re-Installing the Carrying Board



*"Foam"-side pointing to the top of the carrier (baby should lay on it), strap-side down*

## 1. **Insert Board**

Slide the carrying board in through the large horizontal slot and all the way until it stops. The foam side should face to the front of the bag and the side with straps attached should face towards the back of the bag.

## 2. **Pull Straps through Holes**

Reach inside the bag and insert the carrying straps through the four corresponding slots – two on each side of the bag. Make sure you insert them through the correct openings (not through the openings where the swaddle straps are attached).

## 3. **Buckle**

Connect the carrying straps.